

# IamaPLC Communication: LoRa, LoRaWAN and LoRa Mesh

**LoRa** (from “long range”) is a proprietary physical radio communication technique. It uses spread-spectrum modulation techniques derived from chirp spread spectrum (CSS) technology. It was developed by Cycleo, a company based in Grenoble, France, and patented in 2014. Semtech later acquired Cycleo.



**LoRaWAN** (*wide area network*) defines the communication protocol and system architecture. LoRaWAN is an official standard of the International Telecommunication Union (ITU), ITU-T Y.4480. The ongoing development of the LoRaWAN protocol is managed by the open, non-profit LoRa Alliance, of which Semtech is a founding member.

Together, LoRa and LoRaWAN define a low-power, wide-area (LPWA) networking protocol designed to wirelessly connect battery-operated devices to the Internet in regional, national, or global networks, and to meet key *Internet of Things (IoT)* requirements, such as bi-directional communication, end-to-end security, mobility, and localization services. The low power, low bit rate, and IoT use distinguish this type of network from a wireless WAN designed to connect users or businesses and carry more data at higher power. The LoRaWAN data rate ranges from 0.3 kbit/s to 50 kbit/s per channel.

LoRa is one of the most popular low-power wireless sensor network technologies for the Internet of Things, offering long-range communication compared to technologies such as Zigbee or Bluetooth, but with lower data rates.

LoRa operates exclusively within unlicensed (**ISM**) (*Industrial, Scientific, and Medical*) sub-gigahertz bands. Because these bands are license-free, anyone can deploy a network without paying regulatory fees, provided they adhere to regional rules such as duty-cycle limits.

## Global License-Free LoRa Frequency Bands

Region	Primary ISM Band	LoRa Frequency Range	Short name	Regulatory Body
<b>China</b>	230 MHz	230 MHz	<b>CN230</b>	In China, the 230 MHz band is allocated as a specialized band.
<b>Low Frequency (LO)</b>				
<b>Europe</b>	433 MHz	433 MHz	<b>EU433</b>	<a href="#">ETSI</a>
<b>Asia (Various)</b>	433 MHz	433 MHz	<b>AS433, CN433</b>	Varies by country
<b>China</b>	470 MHz	470 – 510 MHz	<b>CN470, CN470-510</b>	<a href="#">SRRC</a>
<b>Low Frequency (HI)</b>				
<b>China</b>	779 MHz	779 – 787 MHz	<b>CN779, CN779-787</b>	<a href="#">SRRC</a>
<b>India</b>	865 MHz	865 – 867 MHz	<b>IN865, IN865-867</b>	<a href="#">WPC</a>
<b>Europe</b>	868 MHz	863 – 870 MHz	<b>EU868, EU870, EU863-870</b>	<a href="#">ETSI</a>
<b>North America</b>	915 MHz	902 – 928 MHz	<b>US915, US902-928</b>	<a href="#">FCC Part 15</a>
<b>Australia / NZ</b>	915 MHz	915 – 928 MHz	<b>AU915, AU915-928</b>	<a href="#">ACMA</a>

Region	Primary ISM Band	LoRa Frequency Range	Short name	Regulatory Body
China	920 MHz	920 - 922 MHz	<b>CN920</b>	<a href="#">SRRC</a>
South Korea	920 MHz	920 - 923 MHz	<b>KR920, KR920-923</b>	<a href="#">MSIT</a>
Asia (Various)	920 MHz	920 - 923 MHz	<b>AS920, AS920-923 ("AS1")</b>	Varies by country
Asia (Various)	923 MHz	923 - 925 MHz	<b>AS923, AS923-925 ("AS2")</b>	Varies by country

### Regional Highlights

- **Europe (EU868):** Restricted by strict duty cycle limits (often 1%) to ensure fair access to the shared spectrum.
- **North America (US915):** Uses Frequency Hopping (FHSS) instead of duty cycle limits, allowing for higher transmission power up to +30 dBm.
- **India (IN865):** A unique, narrower band that overlaps with some European channels but requires specific hardware tuning.
- **China (CN470):** Specifically allocated for IoT and smart metering, often utilizing the most channels for massive urban deployments.

More information from regional parameters:

[https://lora-alliance.org/wp-content/uploads/2020/11/lorawan\\_regional\\_parameters\\_v1\\_0-20161012\\_1397\\_1.pdf](https://lora-alliance.org/wp-content/uploads/2020/11/lorawan_regional_parameters_v1_0-20161012_1397_1.pdf)

## LoRa Alliance

The LoRa Alliance is an open, non-profit association whose stated mission is to support and promote the global adoption of the LoRaWAN standard for massive-scale IoT deployments and remote or hard-to-reach locations.

Members collaborate in a vibrant ecosystem of device makers, solution providers, system integrators, and network operators, delivering the interoperability needed to scale IoT across the globe through public, private, hybrid, and community networks. Key areas of focus within the Alliance are Smart Agriculture, Smart Buildings, Smart Cities, Smart Industry, Smart Logistics, and Smart Utilities.

Key contributors to the LoRa Alliance include Actility, Amazon Web Services, and Cisco. Everynet, Helium, Kerlink, MachineQ (a Comcast Company), Microsoft, MikroTik, Minol Zenner, Netze BW, Semtech, Senet, STMicroelectronics, TEKTELIC, and The Things Industries. In 2018, the LoRa Alliance had over 100 LoRaWAN network operators in over 100 countries; in 2023, there are nearly 200, providing coverage in nearly every country in the world.


## LoRaWAN vs LoRa Mesh

Feature	LoRa Mesh	LoRaWAN
<b>Network Topology</b>	<b>Mesh</b> (Multi-hop): Nodes relay data to each other	<b>Star</b> (Single-hop): Nodes talk directly to a gateway
<b>Infrastructure</b>	<b>Gateway-free:</b> Can operate entirely between nodes	<b>Gateway-required:</b> Needs a central gateway and network server

Feature	LoRa Mesh	LoRaWAN
<b>Power Efficiency</b>	<b>Lower:</b> Relay nodes must stay awake to forward data	<b>Ultra-low:</b> Devices sleep most of the time; battery life can last years
<b>Scalability</b>	<b>Moderate:</b> Performance may drop as node density and "hops" increase	<b>High:</b> Designed for thousands of devices per gateway
<b>Standardization</b>	<b>Low:</b> Often uses proprietary or custom protocols (e.g., Meshtastic)	<b>High:</b> Globally standardized by the LoRa Alliance
<b>Security</b>	<b>Variable:</b> Depends on the specific implementation	<b>Built-in:</b> Mandatory AES-128 end-to-end encryption
<b>Range</b>	<b>Extended:</b> Hops allow the signal to "wrap around" obstacles	<b>Direct:</b> Limited by the line-of-sight to the nearest gateway

### Summary of Use Cases

- **LoRa Mesh:** Best for niche, infrastructure-free environments like deep forests, tunnels, or off-grid emergency messaging where nodes are out of range of a central gateway.
- **LoRaWAN:** The industry standard for commercial IoT, smart cities, and large-scale agricultural deployments that require high reliability and long battery life.



If you'd like to support the development of the site with the price of a coffee — or a few — [please do so here](#).

Here's a handy tip: you can quickly save this page as a PDF by clicking "export to PDF" in the menu on the right side of the screen.

2026/02/14 22:38

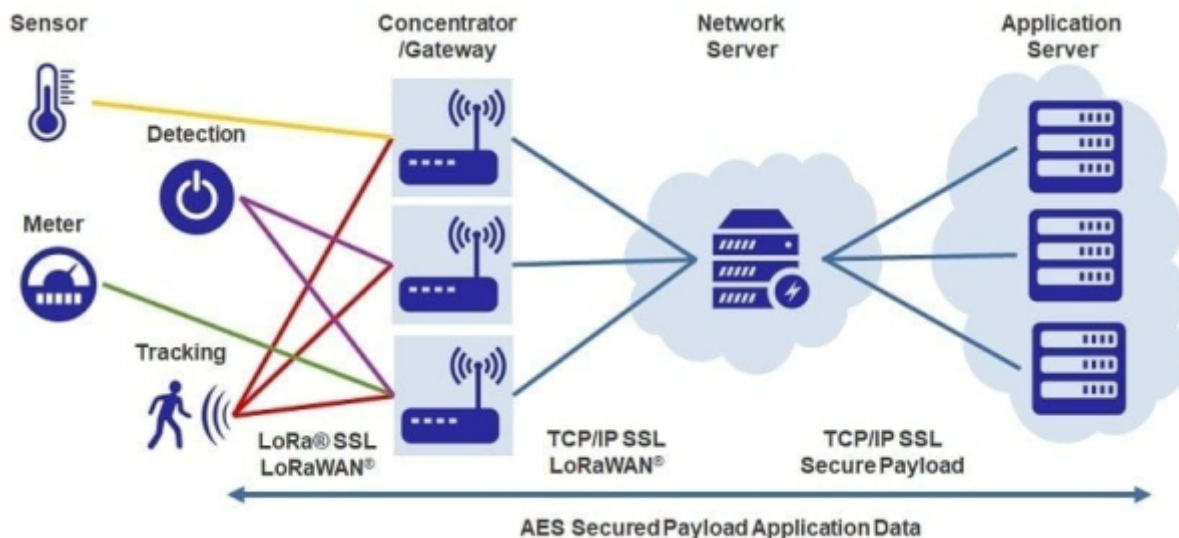
## LoRaWAN

Since LoRa defines the lower, physical layer, the upper networking layers were lacking. LoRaWAN is a protocol that defines the network's upper layers. LoRaWAN is a cloud-based medium access control (MAC) protocol that primarily operates as a network layer protocol for managing communication between LPWAN gateways and end-node devices, and as a routing protocol maintained by the LoRa Alliance.

LoRaWAN defines the network communication protocol and system architecture, while LoRa's physical layer enables long-range communication. LoRaWAN also manages the communication frequencies, data rates, and power for all devices. Devices in the network are asynchronous and transmit only when they have data to send.

Data transmitted by an end-node device is received by multiple gateways, which forward the data packets to a centralized network server. The data is then forwarded to the application servers. This technology shows high reliability under moderate load; however, it has performance issues with acknowledgment transmission.

LoRaWAN networks simplify system building. LoRaWAN is an open, global standard for low-power wide-area (LPWA) wireless networks for the Internet of Things (IoT).



## Things Network (TTN)

The *Things Network (TTN)* is a collaborative, global IoT ecosystem that provides a decentralized LoRaWAN network for community use. As of 2026, it is a primary platform for developers to connect long-range, low-power sensors to the internet without traditional cellular or Wi-Fi subscriptions.

- **The Things Stack Sandbox:** Formerly known as the “*Community Edition*,” this is the free tier for non-commercial, small-scale testing and experimentation.
- **Decentralized Infrastructure:** The network is powered by gateways owned and operated by the community. If a public gateway is nearby, you can connect your device for free; otherwise, you can contribute by setting up your own gateway.
- **Global Connectivity:** TTN supports all major LoRaWAN regional frequency plans, including EU868, US915, AU915, AS923, and IN865.

### Key Features (2026)

- **Protocol Support:** Full compatibility with LoRaWAN 1.0. x and 1.1. x specifications, supporting Class A, B, and C devices.
- **Packet Broker:** A peering service that allows different LoRaWAN networks (such as private enterprise stacks and the public community network) to exchange traffic, extending overall coverage.
- **Security:** Mandatory AES-128 encryption for all data transmissions, with hardware-based security integration available on modern devices such as the “*Generic Node*”.
- **Integrations:** Ready-to-use templates for major cloud platforms, including AWS IoT Core, Microsoft Azure, and Home Assistant.

### Sandbox vs Cloud

Feature	The Things Stack Sandbox (TTN)	The Things Stack Cloud
<b>Cost</b>	Free (Fair Use Policy applies)	Paid (Subscription-based)
<b>Reliability</b>	Best-effort (No SLA)	Guaranteed Uptime (SLA backed)
<b>Best For</b>	Testing, students, and hobbyists	Commercial and production projects
<b>Support</b>	Community Forum	Professional expert support

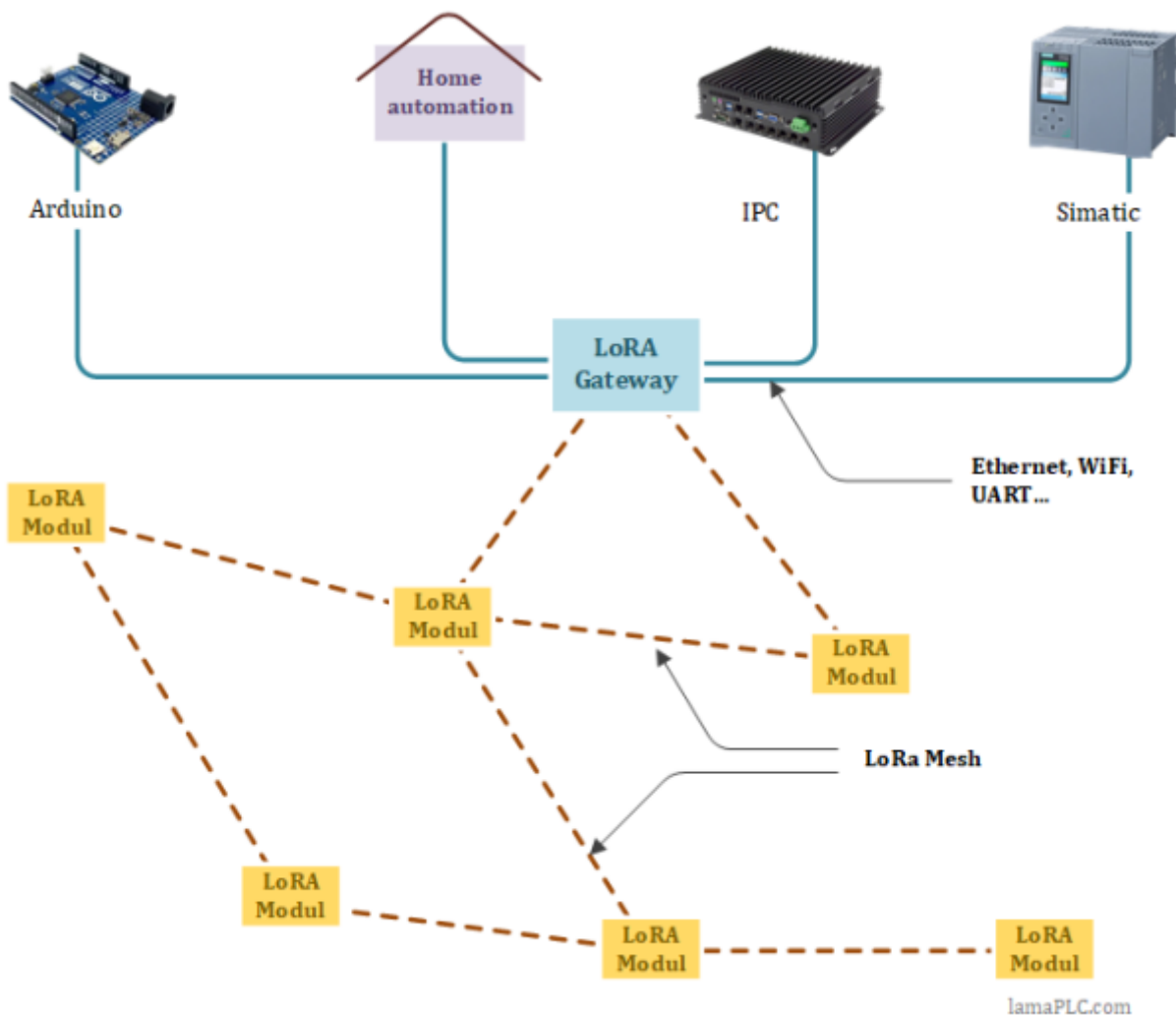
Use tools like [TTN Mapper](#) to check whether there are active gateways in your area.

# LoRa Mesh

LoRa mesh is a decentralized network architecture in which individual nodes communicate directly with one another and relay data across multiple “hops” to extend range. Unlike standard LoRaWAN, which uses a centralized star topology, LoRa mesh enables infrastructure-free, self-healing communication in environments where direct line-of-sight is obstructed.

## Key Characteristics

- **Multi-Hop Relaying:** Every node in the network can act as a relay, forwarding data from other nodes until it reaches its final destination.
- **Self-Healing & Ad Hoc:** The network is self-organizing; it automatically adjusts its topology when nodes join, leave, or fail, ensuring continuous data transmission.
- **Decentralized Structure:** There is no single point of failure; the nodes themselves handle all routing.
- **Infrastructure-Free:** It operates without the need for centralized gateways, cell towers, or internet connectivity, making it ideal for off-grid use.
- **Long Range & Low Power:** Leveraging LoRa's Chirp Spread Spectrum (CSS) modulation, it maintains a range of several kilometers while consuming minimal battery power.
- LoRa mesh networking allows devices to **spontaneously form** decentralized, self-organizing networks without the need for pre-existing infrastructure like cellular towers or internet gateways.



## Spontaneous Networking Capabilities

LoRa mesh networks excel in scenarios where communication must be established “on the fly” because they do not rely on a central coordinator.

- **Self-Organization:** Nodes automatically discover neighbors and establish routing paths when powered on, forming a functional network in minutes.
- **Infrastructure Independence:** Unlike LoRaWAN, which requires static gateways and a central server, a LoRa mesh operates entirely through node-to-node multi-hop communication.
- **Dynamic Reconfiguration:** If a node moves or fails, the network “self-heals” by automatically finding new transmission paths through other available nodes.
- **Emergency Deployment:** In disaster zones or wildfires, handheld LoRa nodes can extend signal reach (up to 5 km in dense urban areas) to provide critical GPS and text communication.




## LoRa Mesh Applications

### LoRa Mesh by EByte

Ebyte offers several specialized LoRa MESH units designed for decentralized, self-healing networks where each node can relay data to extend range beyond a single point-to-point link. Unlike standard LoRaWAN, these modules use Ebyte's proprietary “New LoRa MESH” technology for autonomous networking.

Ebyte's LoRa MESH lineup ranges from the compact E52 module for PCB integration to the industrial-grade EWD95M DTU. While the E52 and EWD95M specifically feature Ebyte's “New LoRa MESH” ad-hoc networking, the E610 series is primarily a high-speed continuous transmission module that can be used in mesh-like topologies via manual relay or specialized firmware.

### Some EByte MESH Module Comparison Table

Feature	Ebyte E52-400/900NW22S	Ebyte E610-433/900T30S	Ebyte EWD95M-400/900NW22
			
<b>Type</b>	Embedded SMD Module	High-Power Serial Module	Industrial Rail-Mount DTU
<b>Frequency</b>	410-509 / 850-930 MHz	410-441 / 850-930 MHz	410-493 / 850-930 MHz
<b>Transmit Power</b>	22 dBm (160mW)	30 dBm (1W)	22 dBm (160mW)
<b>Mesh Support</b>	Native (New LoRa MESH)	Auto-Relay / High-Speed	Native (New LoRa MESH)
<b>Max Distance</b>	~2.5 km (Single Hop)	~10 km (Single Hop)	~2.5 km (Single Hop)

Feature	Ebyte E52-400/900NW22S	Ebyte E610-433/900T30S	Ebyte EWD95M-400/900NW22
Interface	UART (Serial)	UART (Serial)	RS485 / RS232
Key Advantage	Self-healing, 255-level routing	High-speed continuous data	Industrial "three-proof" shell

- **E52-400/900NW22S** (The Network Specialist)
  - **Networking:** According to CDEBYTE, this module uses a decentralized "New LoRa MESH" protocol that supports up to thousands of nodes and 255 routing levels.
  - **Reliability:** Features include CSMA collision avoidance, network self-healing (automatic rerouting), and encrypted transmission.
  - **Ease of Use:** Specifically designed for smart home and industrial sensors where nodes might be frequently added or removed.
  
- **E610-433/900T30S** (The Long-Range Powerhouse)
  - **Speed:** Identified by Ebyte as an "unlimited high-speed continuous transmission" module, offering air rates up to 470kbps.
  - **Power:** Operates at 1W (30dBm), making it the strongest option for long-range links up to 10km.
  - **Integration:** Primarily uses GFSK modulation but is often grouped with LoRa products due to its long-range performance and UART simplicity.
  
- **EWD95M-400/900NW22** (The Industrial Solution)
  - **Hardware:** A "Micro Wireless Data Radio" featuring a DIN-rail mount and a shell with anti-fungal, anti-humidity, and anti-salt spray coating.
  - **Compatibility:** Supports the same "New LoRa MESH" as the E52 series, making it the ideal edge device for connecting RS485 sensors (like Modbus RTU) to a mesh network.
  - **Power Supply:** Supports a wide voltage input range of 8V to 28V DC, suitable for standard industrial power cabinets.
  
- **Note on Selection:** If your priority is a self-organizing network for low-power sensors, the E52 series is the standard choice. If you require industrial durability and RS485 connectivity out of the box, use the EWD95M

### LoRa Mesh by WaveShare


Waveshare's LoRa product line primarily utilizes the SX1262 chip. While Waveshare does not use the same "New LoRa MESH" proprietary protocol as Ebyte, several of their units support multi-level relaying and auto-repeating, which allow for decentralized, long-range mesh-like network topologies.

### Some WaveShare MESH Module Comparison Table

Feature	SX1262 LoRa HAT	SX1262 LoRa DTU	Core 1262 Module
			

Feature	SX1262 LoRa HAT	SX1262 LoRa DTU	Core 1262 Module
Primary Use	Raspberry Pi / Arduino / STM32 / UART Nodes	Industrial Data Transfer	Embedded PCB Core
Mesh/Relay Type	Auto Multi-level Repeating	Multi-level Relay	Hardware-only (Custom)
Max Range	5 km (Single Hop)	5 km (Single Hop)	5 km (Single Hop)
Interface	UART / USB / GPIO	RS232 / RS485 / RS422	SPI
Power	22 dBm (Max)	22 dBm (Max)	22 dBm (Max)
Enclosure	Open Board	Industrial DIN-Rail	Raw SMD / Pins

- **SX1262 LoRa HAT** (For Raspberry Pi / Arduino / STM32)
  - **Networking:** Supports a private protocol for auto-repeating, allowing it to transmit further than its 5km base range by hopping through intermediate nodes.
  - **Features:** Includes Listen Before Talk (LBT) and Wake on Radio (WOR) to improve success rates in dense environments and save battery.
  - **Compatibility:** Note that this HAT does not support LoRaWAN; it is designed for private node-to-node or mesh networks.
- **SX1262 LoRa DTU** (Industrial Unit)
  - **Industrial Design:** Encased in an aluminum alloy shell with protection against over-voltage, surges, and ESD.
  - **Relay Support:** Specifically marketed for multi-level relay networking, making it suitable for extremely long-distance communication in complex industrial or agricultural environments.
  - **Configuration:** Supports AT commands for setting parameters like AES encryption and relay levels.
- **Core1262 HF/LF** (Core Module)
- **Versatility:** This is the raw hardware used in the other products. While it doesn't have a built-in mesh firmware, it is the standard choice for developers building custom mesh solutions like Meshtastic or proprietary protocols.
- **Stability:** Features a high-quality TCXO (Temperature Compensated Crystal Oscillator) to ensure stable communication in extreme temperatures (-40 to 85°C).



If you'd like to support the development of the site with the price of a coffee — or a few — [please do so here](#).

Here's a handy tip: you can quickly save this page as a PDF by clicking "export to PDF" in the menu on the right side of the screen.

2026/02/14 22:38

## LoRa technical solutions

LoRa systems differ from similar network systems in many ways; more about these differences.

## Classes

The LoRaWAN specification has three different communication profiles between devices and applications: Class A, Class B, and Class C. Each class serves different application needs and has optimized requirements for specific purposes. The main difference between the three classes is latency and power consumption: end-devices can always send uplinks when needed, but their class determines when to receive downlinks.

### Class A: "Aloha"

This is the default operational mode for LoRaWAN networks, and all devices must support it. These devices implement a bidirectional communication profile in which two short downlinks follow the end-device's uplink transmission receive windows, usually referred to as RX1 and RX2. If the server does not respond in either RX1 or RX2, the next opportunity will be after the next uplink transmission. Class A devices are often battery-powered and spend most of their time in sleep mode; therefore, they have the lowest energy consumption, maintain long intervals between uplinks, and experience high downlink latency.

### Class B: The "Beaconing" Class

Class B devices extend Class A devices by adding scheduled receive windows for downlinks, thereby emulating a continuously receiving device by opening receive windows at fixed intervals. This class should be implemented when low-latency downlink communication is required while keeping power consumption as low as possible.

### Class C: Continuous Reception

A Class C communication profile is used in applications with sufficient power, so there is no need to minimize the duration of reception windows; this is the case for most actuators (e.g., smart plugs, street lights, electrical meters, etc.). Class C devices always listen for downlink messages unless they transmit an uplink message. This behavior results in the lowest latency between the server and the end device.

## CSMA for LoRa

In wireless communication, particularly within the IoT domain, effective channel utilization and collision avoidance are essential for network reliability and spectral efficiency. Previously, LoRaWAN has relied on ALOHA as the *medium access control* (**MAC**) layer protocol.

To improve this, the LoRa Alliance's Technical Recommendation TR013 introduces **CSMA-CA**, tailored to account for LoRa's distinctive modulation characteristics, including Spreading Factor orthogonality and the capability for communication below the noise floor.

## Adaptive Data Rate (ADR)

To maximize the battery life of each end device and the overall network capacity, LoRa uses an Adaptive Data Rate (ADR) mechanism to optimize data rates, airtime, and power consumption. ADR controls the following transmission parameters on end devices:

- **Spreading factor:** the speed of data transmission. Lower spreading factors indicate a higher data transmission rate.
- **Bandwidth:** the amount of data that can be transmitted from one point to another within the network.
- **Transmission power:** the energy the end-device transmitter produces at its output.

### Spreading factor (SF)

The table below compares spreading factor, data rate, and time on-air at a bandwidth default of 125 kHz (125/250/500 kHz):

Spreading Factor	Data Rate	Range	Time on-Air	Approx. SNR Limit
<b>SF7</b>	5470 bps	2 km	56 ms	-7.5 dB
<b>SF8</b>	3125 bps	4 km	100 ms	-10 dB
<b>SF9</b>	1760 bps	6 km	200 ms	-12.5 dB
<b>SF10</b>	980 bps	8 km	370 ms	-15 dB
<b>SF11</b>	440 bps	11 km	40 ms	-17.5 dB
<b>SF12</b>	290 bps	14 km	1400 ms	-20 dB

The **minimum SNR** required to successfully decode a packet depends on the *Spreading Factor (SF)*. Higher SFs allow for lower (more negative) SNR thresholds, increasing range at the cost of data rate.

### Data Rate & Spreading Factor for 125 kHz BW

For a fixed 125 kHz bandwidth, the data rate (speed) and sensitivity (range) are determined by the Spreading Factor (SF). According to The Things Network, lower SF values provide higher data rates but shorter range.

Data Rate (DR)	Modulation	Spreading Factor	Bandwidth	Indicative Bit Rate
<b>DR0</b>	LoRa	SF12	125 kHz	250 bps
<b>DR1</b>	LoRa	SF11	125 kHz	440 bps
<b>DR2</b>	LoRa	SF10	125 kHz	980 bps
<b>DR3</b>	LoRa	SF9	125 kHz	1760 bps
<b>DR4</b>	LoRa	SF8	125 kHz	3125 bps
<b>DR5</b>	LoRa	SF7	125 kHz	5470 bps
<b>DR6</b>	LoRa	SF7	250 kHz	11 Kbps
<b>DR7</b>	FSK	SF7	-	50 Kbps
<b>DR8</b>	LR-FHSS	-	137 kHz	162 bps
<b>DR9</b>	LR-FHSS	-	137 kHz	325 bps
<b>DR10</b>	LR-FHSS	-	336 kHz	162 bps
<b>DR11</b>	LR-FHSS	-	336 kHz	325 bps

LoRa EU863-870 DR characteristics.

## LR-FHSS

LR-FHSS extends LoRa's physical-layer modulation to improve data transmission in congested networks where capacity is limited by duty-cycle restrictions, channel availability, and collision risks. It employs frequency-hopping spread spectrum (FHSS), which increases link range and enables many devices to communicate on the same channel simultaneously, with signals still being properly received and demodulated by the gateway. LR-FHSS is the LoRa Alliance's implementation of FHSS, a method also used in technologies like Bluetooth and early Wi-Fi versions. FHSS rapidly switches the carrier frequency across a set of channels, offering greater resistance to interference and unauthorized access. This is especially useful in satellite networks where end devices and gateways are distant and node density is high. LR-FHSS handles only uplink transmission; the downlink remains on the LoRa PHY.

There are four LR-FHSS DRs: DR8 to DR11, and all of them are included.

## Transmission power / RF power (PWR)

LoRa transmission power (often denoted as **PWR** or TX Power) is the radio-frequency (RF) power delivered to the antenna, typically measured in dBm (decibels-milliwatts). This setting is strictly governed by regional regulations (FCC, ETSI) to prevent interference and is a primary driver of both communication range and battery life.

### Regional Power Limits

Maximum allowable power varies significantly by region and frequency plan. Exceeding these limits is illegal and can lead to device non-compliance.

Region	Frequency Plan	Max Transmit Power (ERP/EIRP)	Regulatory Body
<b>Europe (HI)</b>	EU863-870	+14 to +16 dBm (~25-40 mW)	ETSI
<b>Europe (LO)</b>	EU433	+12.15 dBm	ETSI
<b>North America</b>	US902-928	+30 dBm (1 Watt)	FCC
<b>Australia</b>	AU915-928	+30 dBm	ACMA
<b>Asia</b>	AS923	+13 to +16 dBm	Varies (e.g., ARIB)
<b>India</b>	IN865-867	+30 dBm	WPC
<b>China</b>	CN433	12.15 dBm	MIIT/SRRC
<b>China</b>	CN470	17 dBm to 19 dBm (50 mW)	MIIT/SRRC
<b>China</b>	CN779	12.15 dBm	MIIT/SRRC
<b>China</b>	CN920	12.15 dBm (~16 mW)	MIIT/SRRC

### Impact on Performance

Adjusting the PWR setting creates a direct trade-off between the reliability of your mesh or point-to-point network and the device's operational lifespan.

- **Range:** Increasing transmit power extends the signal reach. In real-world urban settings, you may need to increase power by 4-10 times (6-10 dB) to double the effective communication

distance.

- **Battery Life:** Higher TX power consumes significantly more current. For example, a 3 dB increase in power can nearly double the energy required per transmission, which is critical for devices intended to last 5–10 years.
- **Adaptive Data Rate (ADR):** In LoRaWAN, the network server often manages PWR automatically. If a device is close to a gateway, the server will command it to lower its power to save battery and reduce network noise.

### Signal-to-Noise Ratio (SNR)

In LoRa technology, *Signal-to-Noise Ratio (SNR)* is a critical metric that evaluates the quality of a radio link by comparing the power of the received signal to the power of the background noise

### Key Characteristics of LoRa SNR

Sub-Noise Demodulation: Unlike most wireless technologies (such as Wi-Fi), LoRa can demodulate signals below the noise floor. This means you will often see negative SNR values.

- **Typical Ranges:** LoRa SNR values generally range from -20 dB to +10 dB.
- **Performance Tiers:**
  - **Excellent:** > +5 dB to +10 dB.
  - **Good:** 0 dB to +5 dB.
  - **Acceptable (Negative):** -5 dB to -20 dB. In this range, the signal is “buried” in noise, but the LoRa modulation can still recover it using high spreading factors.

### Frequency / Bandwidth / Channels

#### LoRa channels

LoRa channels in the 433 MHz range are primarily defined by the EU433 frequency plan, which is used in Europe (ITU Region 1) and parts of Asia. Compared to the 863–928 MHz bands, the 433 MHz band offers superior signal penetration through obstacles like buildings and terrain, but has a much narrower total bandwidth and fewer available channels.

#### Channel Comparison: 433 MHz vs. 863-928 MHz

Feature	EU433 (433 MHz Band)	EU868 / US915 / AU915 / AS923
Frequency Range	433.05 – 434.79 MHz	863 – 928 MHz (varies by region)
Default Channels	433.175, 433.375, 433.575 MHz e.g.,	868.1, 868.3, 868.5 MHz (EU868)
Total Channels	Supports at least 16 channels	8 to 72+ channels (varies by region)
Bandwidth	125 kHz (standard)	125 kHz, 250 kHz, or 500 kHz
Max Tx Power	+10 to +12.15 dBm (ERP/EIRP)	+14 dBm (EU) up to +30 dBm (US/AU)
Duty Cycle	1% (recommended for LoRaWAN)	1% (EU) or Frequency Hopping (US/AU)
Key Advantage	High penetration through walls/terrain	Higher data rates and network capacity

#### Regional Usage and Constraints

- **European Union (EU433):** Governed by ETSI EN300.220, the 433 MHz band is a “secondary” allocation. While it allows a duty cycle of up to 10% legally, LoRaWAN typically limits this to 1% to minimize congestion.
- **North America:** The 433 MHz band is not used for LoRaWAN in the US or Canada, as it is largely reserved for government and amateur radio operations. These regions exclusively use the 902–928 MHz band (US915).
- **China (CN470):** While 433 MHz is used in Asia, China uses a wider band from 470–510 MHz for smart metering and urban LoRa networks.
- **Hardware Compatibility:** Devices like the Semtech SX1278 are specifically designed for the 433 MHz band, offering a reported communication distance of up to 15km under ideal conditions.

## Performance Trade-offs

- **Range vs. Power:** A 433 MHz signal can travel roughly twice as far as an 868 MHz signal at the same power level due to physics. However, because the legal power limit is often lower for 433 MHz (+10 dBm) than for 868 MHz (+14 dBm), the real-world range is often similar in many deployments.
- **Antenna Size:** Because 433 MHz has a longer wavelength, antennas must be roughly twice as large (approx. 17cm for a 1/4-wave whip) as 868/915 MHz antennas (approx. 8cm), which can be a constraint for compact mobile devices.

## EU433

The following table lists the mandatory join channels and the common data rate configurations for the 433 MHz band with 125 kHz Bandwidth.

Channel Type	Center Frequency	Bandwidth	Spreading Factor (SF)	Data Rate (DR)
<b>Default 0</b>	433.175 MHz	125 kHz	SF12	DR0 (250 bps)
<b>Default 1</b>	433.375 MHz	125 kHz	SF11	DR1 (440 bps)
<b>Default 2</b>	433.575 MHz	125 kHz	SF10	DR2 (980 bps)
<b>Optional</b>	433.775 MHz*	125 kHz	SF9	DR3 (1760 bps)
<b>Optional</b>	433.975 MHz*	125 kHz	SF8	DR4 (3125 bps)
<b>Optional</b>	434.175 MHz*	125 kHz	SF7	DR5 (5470 bps)

\*Note: The network operator can add additional channels within the 433.05–434.79 MHz range.

## Technical Constraints

- **Mandatory Channels:** All EU433 end-devices must implement the first three channels (433.175, 433.375, and 433.575 MHz) to ensure they can join any network.
- **Duty Cycle:** While local regulations (ETSI) may allow up to a 10% duty cycle, LoRaWAN typically enforces a 1% limit to avoid congestion in this narrow band.
- **Max Power:** The maximum transmit power for EU433 is generally limited to +12.15 dBm EIRP (or +10 dBm ERP).

## EU868 / US915 / AU915 / AS923

## Regional Parameters Comparison

Feature	EU863-870 (Europe)	US902-928 (North America)	AU915-928 (Australia/NZ)	AS923 (Asia-Pacific)
Regulation	<a href="#">ETSI EN300.220</a>	<a href="#">FCC Part 15</a>	<a href="#">ACMA Standards</a>	Varies (e.g., ARIB JP)
Uplink Channels	8 to 16	64 (125kHz) + 8 (500kHz)	64 (125kHz) + 8 (500kHz)	2 to 16
Join Channels	3 (868.1, 868.3, 868.5)	64 (902.3-914.9 MHz)	64 (915.2-927.8 MHz)	2 (923.2, 923.4 MHz)
Tx Power (Max)	+14 to +16 dBm	+30 dBm	+30 dBm	+14 to +16 dBm
Duty Cycle	1% strict	None (uses FHSS)	None (uses FHSS)	1% or LBT
Dwell Time	No limit	400 ms	400 ms	400 ms (Optional)

### Key Differences & Use Cases

- **Capacity vs. Range:** US915 and AU915 have significantly more channels (72 total), making them better suited for high-density IoT deployments where many devices transmit simultaneously.
- **Spectrum Management:** Europe (EU868) uses strict duty cycle limits to prevent band congestion, while the US and Australia use Frequency Hopping (FHSS) to switch between channels.
- **AS923 Variants:** To accommodate regional differences across Asia, this plan is divided into sub-plans, such as AS923-1 (Japan, Singapore) and AS923-2 (Vietnam, Indonesia), each with specific frequency offsets.
- **Hardware Selection:** While some modern modules, such as the iM980B, are pre-certified for multiple regions, you must still ensure your antenna is tuned to the target frequency (868 vs 915 MHz) for optimal performance.

### EU863-870

In the EU863-870 frequency plan, channels are managed under strict ETSI duty-cycle limits to prevent interference. Devices must implement the three mandatory join channels to be LoRaWAN-compliant.

#### Mandatory Join Channels (125 kHz BW)

These channels are used for the “Join Request” and initial communication. Every gateway and end-device in Europe must support them.

Channel	Frequency	Bandwidth	Duty Cycle
0	868.10 MHz	125 kHz	< 1%
1	868.30 MHz	125 kHz	< 1%
2	868.50 MHz	125 kHz	< 1%

#### Common Extended Channels (Multi-Channel Gateways)

Most commercial gateways use an 8-channel configuration. The Things Network (TTN) typically uses these additional five channels:

Channel	Frequency	Bandwidth	Max Data Rate
3	867.10 MHz	125 kHz	DR5 (SF7)
4	867.30 MHz	125 kHz	DR5 (SF7)
5	867.50 MHz	125 kHz	DR5 (SF7)

Channel	Frequency	Bandwidth	Max Data Rate
6	867.70 MHz	125 kHz	DR5 (SF7)
7	867.90 MHz	125 kHz	DR5 (SF7)

### Special Purpose Channels

- **High-Speed Channel:** 868.30 MHz can also be used at 250 kHz bandwidth (DR6 / SF7BW250) for faster data transmission.
- **FSK Channel:** 868.80 MHz is often reserved for FSK (Frequency Shift Keying) modulation at 50 kbps.
- **RX2 (Downlink) Window:** The default frequency for the second receive window is 869.525 MHz at SF9 (DR3).

### Key Constraints

- **Duty Cycle:** You can only transmit for 3.6 seconds per hour on a 0.1% channel or 36 seconds per hour on a 1% channel.
- **Listen Before Talk (LBT):** While not mandatory in EU868, LBT can be used as an alternative to duty-cycle limits in some sub-bands.

### Default Settings

The following parameters are recommended values for the EU863-870MHz band.

```
RECEIVE_DELAY1 1 s
RECEIVE_DELAY2 2 s (must be RECEIVE_DELAY1 + 1s)
JOIN_ACCEPT_DELAY1 5 s
JOIN_ACCEPT_DELAY2 6 s
MAX_FCNT_GAP 16384
ADR_ACK_LIMIT 64
ADR_ACK_DELAY 32
ACK_TIMEOUT 2 +/- 1 s (random delay between 1 and 3 seconds)
```



If you'd like to support the development of the site with the price of a coffee — or a few — [please do so here](#).

Here's a handy tip: you can quickly save this page as a PDF by clicking "export to PDF" in the menu on the right side of the screen.

2026/02/14 22:38

### LF vs HF Version

In LoRa hardware, LF (Low Frequency) and HF (High Frequency) refer to physical optimizations of the RF circuitry for specific frequency ranges. Using the wrong version for your region will cause severe signal loss and potential hardware damage due to mismatched internal filters.

Feature	LF Version (Low Frequency)	HF Version (High Frequency)
<b>Optimized Range</b>	410 - 510 MHz	850 - 930 MHz
<b>Primary Regions</b>	China (CN470), Europe (EU433)	Europe (EU868), North America (US915), Australia (AU915)
<b>Typical Chipsets</b>	SX1278, SX1262 (LF variant)	SX1276, SX1272, SX1262 (HF variant)
<b><math>\lambda/4</math> Antenna Length</b>	~16-17 cm	~8 cm
<b>Penetration</b>	Superior; better for basements and deep indoors	Good; better suited for urban/outdoor line-of-sight
<b>Range (at same pwr)</b>	~1.33x farther than HF	~75% of the distance of LF
<b>Data Rate</b>	Generally lower due to narrow bands	Potentially higher; supports wider 500kHz channels in US/AU

### Key Technical Differences

- **Hardware Filtering:** The distinction is physical; LF modules use larger inductors and capacitors in their impedance-matching networks to handle lower frequencies, while HF modules use smaller components for the 800/900 MHz bands.
- **Regulatory Trade-offs:** LF (433/470 MHz) typically experiences less interference but has very strict power and duty cycle limits in Europe. HF (868/915 MHz) is more crowded but supports Frequency Hopping (FHSS) in North America, allowing higher transmit power.
- **Antenna Size:** Because wavelength ( $\lambda$ ) is inversely proportional to frequency, LF antennas must be roughly twice as long as HF antennas to maintain resonance.

## Authentication and Security

### Dual-Layer Encryption (LoRaWAN Standard)

Most LoRa mesh implementations (like LoRa Mesh Networking by Semtech) utilize the standard LoRaWAN 1.1 security architecture, which separates network and application security:

- **NwkSKey (Network Session Key):** Ensures message integrity as it hops through the mesh. Intermediate nodes can see the routing metadata but cannot read the payload.
- **AppSKey (Application Session Key):** Provides end-to-end encryption. Only the final application server can decrypt the actual sensor data.

### Node Authentication Methods

To prevent “*Sybil attacks*” (where a fake node joins to disrupt routing), nodes must authenticate using one of two methods:

- **OTAA (Over-the-Air Activation):** The most secure method. Nodes perform a “handshake” using a unique AppEUI and AppKey to generate dynamic session keys. This is the preferred method for Mesh because keys are never hardcoded.
- **ABP (Activation by Personalization):** Keys are hardcoded into the device. While simpler, mesh is less secure because if one node is physically compromised, its static keys are exposed forever.

### Open-Source Mesh Security (e.g., Meshtastic)

For off-grid mesh systems like Meshtastic, security is often handled via Channels:

- **AES-256 Encryption:** Every packet is encrypted with a pre-shared key (PSK) assigned to a specific channel (e.g., “LongFast”).
- **Public vs. Private:** You can set up a Private Channel with a unique key, so even if nearby nodes are present, they cannot see or repeat your traffic unless they have the key.

### Hardware-Level Security

For high-security industrial mesh, designers often use Secure Elements (such as the Microchip ATECC608). These chips store the LoRa keys in a tamper-proof hardware vault, so the keys cannot be extracted even if the node is stolen.

### Mesh-Specific Security Challenges

Threat	Mitigation Strategy
<b>Replay Attacks</b>	Using Frame Counters. If a node receives a packet with a counter lower than the last one processed, it drops the packet.
<b>Wormhole Attacks</b>	Using Time-to-Live (TTL) or hop limits to prevent packets from being endlessly recirculated or tunneled.
<b>Selective Forwarding</b>	Implementing Acknowledge (ACK) requirements. If a neighbor node consistently fails to forward, the mesh re-routes via a different path.

### Encoding Rate (ER)

In LoRa technology, the *Encoding Rate (ER)* - more commonly referred to as the *Coding Rate (CR)* - is the forward error correction (FEC) setting used to protect the data against interference and noise.

LoRa adds redundant bits to the data packet. If some bits are lost or corrupted during transmission due to interference (common in the crowded CN470 or EU868 bands), the receiver can use these extra bits to reconstruct the original message without requesting a retransmission.

### Standard Coding Rate Values

The Coding Rate is expressed as a fraction  $4/(4+n)$ , where n ranges from 1 to 4.

Coding Rate	Ratio	Overhead	Robustness
<b>CR 4/5</b>	1.25x	25% (Low)	Least protection; fastest transmission
<b>CR 4/6</b>	1.50x	50%	Medium protection
<b>CR 4/7</b>	1.75x	75%	High protection
<b>CR 4/8</b>	2.00x	100% (High)	Best protection; slowest transmission

### Impact on Transmission

- **Time on Air (ToA):** A higher CR (such as 4/8) increases the packet size, making “Time on Air” longer. In regions with strict duty-cycle or dwell-time limits (such as China's <1s rule), using a high CR might require sending smaller payloads to stay legal.
- **Battery Life:** Because the radio stays in “transmit mode” longer to send the extra bits, a higher CR consumes more battery power.
- **Reliability:** In high-interference environments (e.g., industrial plants or dense urban areas using CN470), a higher CR (such as 4/7 or 4/8) is often necessary to ensure the packet arrives intact.

## LoRaWAN Standard

For almost all standard LoRaWAN networks (including The Things Network), the fixed coding rate is **4/5**. This provides a baseline level of protection while keeping overhead low to maximize battery life and network capacity.

## Network Identifier (NetID)

In LoRaWAN, the *Network Identifier (NetID)* is a 24-bit value assigned by the LoRa Alliance to uniquely identify a network operator. It ensures that device addresses (DevAddr) do not overlap across networks, which is critical for roaming and avoiding cross-network interference.

### Structure and Types

The NetID is divided into “Types” (0-7) based on network size. Large operators receive small NetID ranges that support millions of devices, while smaller private networks use different types.

NetID Type	Bit Length	Max Device Addresses	Target Use Case
<b>Type 0/1</b>	6 bits	32,768 to 2M+	Large Public Operators (e.g., Orange, Helium)
<b>Type 3</b>	21 bits	512	Small Private or Enterprise Networks
<b>Type 7</b>	24 bits	Variable	Localized Private Networks

### The DevAddr Relationship

The NetID is embedded within the DevAddr (32-bit Device Address). When a gateway receives a packet, the Network Server checks the NetID prefix in the DevAddr to determine whether the packet belongs to its network or should be “roamed” to another provider via the LoRa Alliance IPX.

### Public vs. Private IDs

- **The Things Network (TTN):** Uses a specific set of NetIDs (e.g., 0x000013) to identify traffic across its global community clusters.
- **Experimental/Private:** The IDs 0x000000 and 0x000001 are often reserved for testing or private networks (such as a local ChirpStack instance) that do not require global roaming.

### LoRa P2P / Mesh “Network ID”

If you are using LoRa Peer-to-Peer (P2P) or systems like Meshtastic, “Network ID” usually refers to a Sync Word:

- **Public (0x34):** The default sync word for LoRaWAN networks. Devices using this can “see” (but not decrypt) LoRaWAN traffic.
- **Private (0x12):** Used to isolate private P2P networks so they ignore LoRaWAN packets at the hardware level, conserving battery life.

### Listen Before Talk (LBT)

*Listen Before Talk (LBT)* is a “politeness” mechanism where a LoRa device scans the channel for existing RF activity before transmitting. If the **RSSI** (*Received Signal Strength Indicator*) is above a defined threshold, the device waits for a clear slot.

In many regions, LBT serves as a legal alternative to strict Duty Cycle limits.

- **Capacity:** In the EU868 band, a device limited to a 1% duty cycle can only transmit for 36 seconds per hour. With LBT enabled, some regulations allow the device to bypass this limit and transmit more frequently, provided the channel is clear.
- **Interference Avoidance:** It prevents “collisions” in dense environments like China (CN470) or Japan (AS923), where many devices share a narrow spectrum.

### Technical Implementation (CCA)

The process is often called Clear Channel Assessment (CCA):

1. **Scan Time:** The radio listens for a fixed duration (e.g., 5 ms or 128 us).
2. **Threshold:** If the signal exceeds -80 dBm (typical for Japan), the channel is “Busy.”
3. **Back-off:** If the channel is busy, the device waits for a random period before retrying.

### Hardware Support

Not all LoRa chips handle LBT efficiently. Modern chips such as the Semtech SX1261/SX1262 include built-in CAD (Channel Activity Detection) and dedicated LBT commands, whereas older chips like the SX1276 require the host MCU to manually implement the listen-and-wait logic.

### Data Transfer Unit (DTU)

In the context of LoRa hardware, a *Data Transfer Unit (DTU)* is an industrial-grade gateway or terminal that converts serial data (RS232/RS485/USB) into LoRa wireless signals. These devices typically operate in one of four primary working modes.

Understanding these modes is critical for setting up Modbus networks or for long-range industrial monitoring.

In industrial LoRa DTUs and high-performance radio modules (such as those from Ebyte or Waveshare), these modes determine how data is buffered and transmitted over the wireless link.

1. **Stream Mode (Continuous):** Stream mode treats the wireless link as a live pipe. It is designed for low latency and real-time data flow. As soon as data enters the serial port (RX), the radio begins transmitting it over the air without waiting for a complete packet or a “stop” character.
2. **Packet Mode (Buffered):** This is the standard operating mode for most IoT devices. Data is collected into a “bucket” before being fired off as a single burst. The DTU buffers incoming serial data until a specific condition is met:
  1. A predefined packet length (e.g., 256 bytes) is reached.
  2. A timeout occurs (no new serial data for ~20ms).
3. **Relay Mode (Repeater):** Relay mode turns the DTU into a “middleman” to extend the communication range beyond a single hop. The device listens for a packet. If the packet's destination address does not match its own, but the “Relay” flag is set, the device re-broadcasts the packet at full power.

Mode	Data Handling	Latency	Reliability
<b>Stream</b>	Instant / Byte-by-Byte	Lowest	Lower (no CRC)
<b>Packet</b>	Buffered / Block-by-Block	Medium	Highest (CRC check)

Mode	Data Handling	Latency	Reliability
Relay	Store and Forward	High	Best for Range Extension

## Transmit (TX) and Receive (RX) channels

In LoRaWAN, the relationship between Transmit (TX) and Receive (RX) channels depends on whether the region uses Symmetric (same frequencies) or Asymmetric (different frequencies) plans.

### Channel Structure by Region

Region	TX / RX Relationship	TX Channels (Uplink)	RX Channels (Downlink)
EU433	Symmetric	433.05 - 434.79 MHz	Same as TX (RX1 window)
EU868	Symmetric	868.1, 868.3, 868.5 MHz	Same as TX (RX1 window)
US915	Asymmetric	902.3 - 914.9 MHz	923.3 - 927.5 MHz
AU915	Asymmetric	915.2 - 927.8 MHz	923.3 - 927.5 MHz
AS923	Symmetric	923.2, 923.4 MHz	Same as TX (RX1 window)
CN470	Asymmetric	470.3 - 489.3 MHz	500.3 - 509.7 MHz

### The Two Receive Windows (RX1 & RX2)

To save battery, a LoRa device only listens for a “downlink” (reply) from the gateway during two precisely timed windows after it finishes its transmission:

- **RX1 Window:** Typically opens 1 second after transmission. In symmetric regions (EU868), it uses the same channel as TX. In asymmetric regions (US915), it uses a fixed frequency offset.
- **RX2 Window:** Opens 2 seconds after transmission. It uses a fixed, dedicated frequency regardless of which channel was used for TX (e.g., 869.525 MHz in Europe or 923.3 MHz in the US).

### Asymmetric Networking (US915/CN470)

In high-capacity plans like US915, the band is split to prevent “self-interference”:

- **Uplink (TX):** Devices communicate with the gateway on the lower 902-915 MHz band.
- **Downlink (RX):** The gateway communicates back on the higher 923-928 MHz band.
- **Sub-bands:** Networks typically group these into 8-channel blocks. For example, if your gateway is on Sub-band 2, your device must TX on channels 8-15 to be heard.

### Hardware “TX/RX” Switching

LoRa chips such as the Semtech SX1262 use a Half-Duplex architecture. This means the device cannot transmit and receive simultaneously. The internal RF switch toggles the antenna between the Power Amplifier (TX) and the Low Noise Amplifier (RX) in accordance with the LoRaWAN protocol timing.

### Received Signal Strength Indicator (RSSI)

In LoRa systems, RSSI (Received Signal Strength Indicator) is a hardware-measured value of the incoming signal power (in dBm). You don't typically “enable” or “disable” the measurement itself—the radio chip calculates it for every packet received—but you can enable or disable the reporting of that

data to your application.

## LoRaWAN (Gateways & Network Servers)

In a LoRaWAN environment (like The Things Network or ChirpStack), RSSI is always enabled and sent as metadata with every uplink.

## Address on a LoRa DTU

To set the address on a LoRa DTU, you must first put the device into Configuration Mode (usually by switching physical pins M0/M1). The address is a 16-bit value from 0 to 65535 (0x0000 to 0xFFFF).

### Understanding the Address Logic

- **Transparent Mode:** If all DTUs are set to the same address (e.g., 0001) and the same channel, they act as a multi-point cable.
- **Fixed-Point Mode:** In this mode, unique addresses matter. To send data from Node A to Node B (Address 1234), Node A sends a 3-byte prefix: [High Addr] [Low Addr] [Channel] + Data.
- **Broadcast Address (65535 / 0xFFFF):** If a DTU sends data to address 65535, every node on the same channel will receive it, regardless of its own address.

## Semtech LoRa transceiver series

The table below compares the primary Semtech LoRa transceiver series. The SX126x represents the newer generation with improved power efficiency and higher transmit power, while the SX127x series remains a widely used legacy standard.

Feature	SX1261	SX1262	SX1276	SX1272	SX1278
<b>Frequency Range</b>	150–960 MHz	150–960 MHz	137–1020 MHz	860–1000 MHz	137–525 MHz
<b>Max TX Power</b>	+15 dBm	+22 dBm	+20 dBm	+20 dBm	+20 dBm
<b>RX Current</b>	4.6 mA	4.6 mA	9.9–11 mA	10 mA	11 mA
<b>Max Sensitivity</b>	-148 dBm	-148 dBm	-148 dBm	-138 dBm	-148 dBm
<b>Link Budget</b>	163 dB	170 dB	168 dB	158 dB	168 dB
<b>Spreading Factor</b>	SF5–SF12	SF5–SF12	SF6–SF12	SF6–SF12	SF6–SF12
<b>Primary Region</b>	Global (Low Pwr)	Global (High Pwr)	EU/NA (HF)	EU/NA (HF only)	China/Asia (LF)

### Key Series Differences

- **SX1261 vs. SX1262:** These chips are nearly identical in functionality, but the SX1261 is optimized for low-power transmissions up to +15 dBm (ideal for European ETSI limits), whereas the SX1262 can reach +22 dBm for maximum range.
- **Generational Improvement:** The newer SX126x series uses approximately 50% less current in receive mode (~4.6 mA) than the older SX127x series (~10 mA), significantly extending battery life for IoT sensors.
- **SX1276 vs. SX1278:** These chips are nearly identical in performance, but the SX1278 is strictly a “Low Frequency” (LF) chip for the 433/470 MHz bands used in China and Southeast Asia. The SX1276 is a universal chip that supports both LF and HF (868/915 MHz) bands.
- **Modulation Support:** Both series support LoRa and (G)FSK modulations. However, the SX126x

series adds a new SF5 spreading factor, enabling higher data rates in dense network environments.

## Energy Harvesting for LoRa

This technology enables LoRa sensors to operate battery-free or to achieve significantly extended battery life by harvesting energy from the surrounding environment. Because LoRaWAN is ultra-low power, it can run on the tiny amounts of energy generated by these sources.

- **Solar (Photovoltaic):** The most common method, using outdoor or indoor solar cells to power devices such as air quality sensors or smart agricultural trackers.
- **Thermal (TEG):** Uses temperature differences (e.g., between a hot pipe and the air) to generate electricity.
- **Kinetic/Vibration:** Captures energy from movement or button presses to send occasional data packets.
- **Radio Frequency (RF):** Scavenges energy from existing wireless signals such as Wi-Fi or TV broadcasts.
- **Current Transformer (CT) Harvesting:** A coil is clamped around an AC power line. The alternating current generates a magnetic field that induces a current in the harvester's coil, acting as a transformer.
- **Kinetic Electromagnetic Induction:** Uses a magnet moving through a coil (often triggered by vibrations or rotational motion) to generate electricity. This is commonly used in "self-powered" wireless switches.
- **Stray Magnetic Field Harvesting:** Captures "leaked" magnetic energy near large electrical equipment such as substations or motors.
- **Harvester (Coil):** Captures the magnetic flux.
- **Rectification:** Converts the induced AC voltage to DC.
- **Power Management IC (PMIC):** High-efficiency chips such as the STMicroelectronics SPV1050 or the e-peas AEM series use Maximum Power Point Tracking (MPPT) to extract the maximum energy even at low input voltages (as low as 380 mV).
- **Storage:** Harvested energy is stored in supercapacitors or small rechargeable batteries to provide the high-current "bursts" needed during data transmission by the Ra-01/Ra-02.

## Lora Manufacturers

Manufacturer	Core Interface	Typical Series	Link on lamaPLC	Target Market	Key Strengths
<b>Ebyte</b>	UART (Serial)	E32, E22, E220	<a href="#">Ebyte E22, E220, E30, E32</a>	Industrial, DIY, Arduino	High cost-performance; proprietary firmware for easy "transparent" transmission.
<b>Ai-Thinker</b>	SPI	Ra-01, Ra-02	<a href="#">Ra-01, Ra-02</a>	Maker, Hobbyist, Arduino	Very low cost; raw access to Semtech chips; standard in the Arduino community.
<b>Waveshare</b>	SPI / UART	LoRa HATs	<a href="#">Waveshare</a>	Raspberry Pi, Pi Pico, Arduino	Excellent documentation; plug-and-play "HAT" designs for single-board computers
<b>Murata</b>	SPI / UART	Type ABZ, 1Sj	-	Enterprise, Wearables	Extreme miniaturization and low power; often used in high-end consumer products

Manufacturer	Core Interface	Typical Series	Link on IamaPLC	Target Market	Key Strengths
<b>Microchip</b>	UART (AT Commands)	RN2483, RN2903	-	Industrial, Medical	Fully certified LoRaWAN stacks; high reliability and long-term supply
<b>RAKwireless</b>	SPI / UART	WisDuo, WisBlock	-	Industrial IoT, Meshtastic	modular “WisBlock” ecosystem; strong support for Meshtastic and LoRaWAN gateways
<b>HopeRF</b>	SPI	RFM95W, RFM98W	-	DIY, Low-cost OEM	The industry standard for basic SPI modules; widely used in libraries like RadioHead

## Compatibility Among Manufacturers

Although LoRa modules from different manufacturers are based on the same LoRa modulation technology developed by Semtech, they are not always compatible out of the box. Compatibility largely depends on whether you are using a simple SPI-based module or a UART-based one with proprietary firmware.

### Key Compatibility Factors

- **Hardware Interface (SPI vs. UART):** If the modules are standard SPI-based (connecting directly to a microcontroller's SPI bus), they can be made compatible through software. For example, most Ebyte modules (like the E32 series) use a UART serial interface with a built-in MCU running proprietary firmware.
- **Proprietary Protocols:** Ebyte’s UART modules often use a specific “transparent transmission” or “fixed-point” protocol that includes custom packet headers and encryption. These are generally incompatible with other manufacturers' UART modules unless you can exactly replicate those settings on the other device.
- **LoRa Chip Generations:** Modules using the SX1262 (often found in newer Waveshare hats) and SX1278 (common in older Ebyte E32 modules) can communicate, but they have specific incompatibilities, such as Spreading Factor 6 (SF6), which is handled differently by each chip.
- **Firmware Lock-in:** Some Waveshare products, such as their USB-to-LoRa modules, run a custom firmware that may only allow communication between identical modules unless they are reprogrammed.

The incompatibility among the **Ebyte**, **Waveshare**, and **Ai-Thinker** (Ra-01/02) products stems primarily from their differences in data handling (UART vs. SPI) and the use of proprietary firmware.

### Incompatibility Comparison Table

Feature	Ai-Thinker (Ra-01 / Ra-02)	Ebyte (E32 / E220 Series)	Waveshare (LoRa HATs / Modules)
<b>Communication Interface</b>	SPI (Raw access to chip)	UART (Serial TTL)	SPI or UART (Varies by model)
<b>Protocol</b>	Layer Raw LoRa (PHY Layer)	Proprietary Firmware (Transparent/Fixed)	Varies (Some use proprietary, some raw SPI)
<b>User Control</b>	Full control over all LoRa registers	Limited to manufacturer parameters	Depends on the specific module version

Feature	Ai-Thinker (Ra-01 / Ra-02)	Ebyte (E32 / E220 Series)	Waveshare (LoRa HATs / Modules)
Packet Structure	Standard Semtech packets	Custom headers/checksums added by Ebyte	Standard (SPI) or Proprietary (UART)
Antenna Connection	Ra-01: Spring; Ra-02: IPEX	Typically SMA-K	ypically SMA or IPEX

## Manufacturers specify links on lamaPLC

- [Ebyte Products \(E22, E220, E30, E32 Series\)](#)
- [Waveshare Products](#)
- [AI-Thinker Products \(RA-01, RA02\)](#)



## LoRa topics on lamaPLC

Page	Date	Tags
<ul style="list-style-type: none"> <li><a href="#">lamaPLC Communication: IoT</a></li> </ul>	2025/05/31 22:50	<a href="#">communication</a> , <a href="#">iot</a> , <a href="#">internet</a> , <a href="#">iomt</a> , <a href="#">6lowpan</a> , <a href="#">ipv4</a> , <a href="#">ipv6</a> , <a href="#">bluetooth</a> , <a href="#">ble</a> , <a href="#">li-fi</a> , <a href="#">nfc</a> , <a href="#">rfid</a> , <a href="#">wi-fi</a> , <a href="#">zigbee</a> , <a href="#">z-wave</a> , <a href="#">lte-advanced</a> , <a href="#">5g</a> , <a href="#">lora</a> , <a href="#">dash7</a> , <a href="#">lpwan</a> , <a href="#">lorawan</a> , <a href="#">sigfox</a> , <a href="#">nb-iot</a> , <a href="#">weightless</a> , <a href="#">rpma</a> , <a href="#">mioty</a> , <a href="#">vsat</a> , <a href="#">ethernet</a> , <a href="#">thread</a> , <a href="#">matter</a>
<ul style="list-style-type: none"> <li><a href="#">lamaPLC Communication: LoRa, LoRaWAN and LoRa Mesh</a></li> </ul>	2026/03/05 15:43	<a href="#">communication</a> , <a href="#">bus</a> , <a href="#">lora</a> , <a href="#">lorawan</a> , <a href="#">loramesh</a> , <a href="#">mesh</a> , <a href="#">ism</a> , <a href="#">the things network</a> , <a href="#">ttn</a> , <a href="#">aloha</a> , <a href="#">beaconing</a> , <a href="#">csma</a> , <a href="#">csma-ca</a> , <a href="#">mac</a> , <a href="#">adaptive data rate</a> , <a href="#">adr</a> , <a href="#">spreading factor</a> , <a href="#">sf</a> , <a href="#">transmission power</a> , <a href="#">eu863</a> , <a href="#">eu863-870</a> , <a href="#">eu433</a> , <a href="#">us902-928</a> , <a href="#">au915-928</a> , <a href="#">as923</a> , <a href="#">in865-867</a> , <a href="#">cn433</a> , <a href="#">cn470</a> , <a href="#">cn779</a> , <a href="#">cn920</a> , <a href="#">semtech</a> , <a href="#">sx1261</a> , <a href="#">sx1262</a> , <a href="#">sx1276</a> , <a href="#">sx1272</a> , <a href="#">sx1278</a> , <a href="#">encoding rate</a> , <a href="#">er</a> , <a href="#">time on air</a> , <a href="#">toa</a> , <a href="#">iot</a> , <a href="#">netid</a> , <a href="#">listen before talk</a> , <a href="#">lbt</a>
<ul style="list-style-type: none"> <li><a href="#">lamaPLC: AI-Thinker LoRa products</a></li> </ul>	2026/03/05 15:40	<a href="#">ai-thinker</a> , <a href="#">lora manufacturer</a> , <a href="#">communication</a> , <a href="#">lora</a> , <a href="#">modul</a> , <a href="#">ra-01</a> , <a href="#">ra-02</a> , <a href="#">spi</a> , <a href="#">arduino</a>
<ul style="list-style-type: none"> <li><a href="#">LamaPLC: Arduino MKR Family</a></li> </ul>	2025/08/24 10:19	<a href="#">arduino</a> , <a href="#">board</a> , <a href="#">mkr fox 1200</a> , <a href="#">mkr zero</a> , <a href="#">ethernet</a> , <a href="#">shield</a> , <a href="#">m-bus</a> , <a href="#">rs-485</a> , <a href="#">can</a> , <a href="#">env</a> , <a href="#">sd card</a> , <a href="#">rgb</a> , <a href="#">gps</a> , <a href="#">iot</a> , <a href="#">wifi</a> , <a href="#">sigfox</a> , <a href="#">lora</a> , <a href="#">gsm</a> , <a href="#">lte-m</a>
<ul style="list-style-type: none"> <li><a href="#">lamaPLC: Ebyte LoRa products</a></li> </ul>	2026/03/05 15:20	<a href="#">ebyte</a> , <a href="#">lora manufacturer</a> , <a href="#">communication</a> , <a href="#">lora</a> , <a href="#">modul</a>
<ul style="list-style-type: none"> <li><a href="#">lamaPLC: Waveshare LoRa products</a></li> </ul>	2026/03/05 15:20	<a href="#">waveshare</a> , <a href="#">lora manufacturer</a> , <a href="#">communication</a> , <a href="#">lora</a> , <a href="#">modul</a> , <a href="#">usb-to-lora-xf02</a> , <a href="#">core 1262</a> , <a href="#">1262</a> , <a href="#">spi</a> , <a href="#">arduino</a> , <a href="#">rp2040-lora</a> , <a href="#">rp2040</a>

## Communication topics on lamaPLC

Page	Date	Tags
------	------	------

• ISM Band	2025/11/10 18:53	ism, ism band, rfid, nfc, dash7, hc-12, arduino, zigbee, z-wave, bluetooth, wi-fi, thread, miwi, nrf24, starlink, wiegand, rf, communication, bus, radio, ku band, ka band, k band, x band
• lamaPLC Communication: 1-Wire	2025/05/31 21:56	1-wire, communication, bus, microlan, i2c, uart, usart, ds18b20
• lamaPLC Communication: AS-i	2025/05/31 22:51	bus, communication, as-i, basic, industrial ethernet, devicenet, interbus, manchester-ii, apm
• lamaPLC Communication: Bluetooth basic	2025/11/19 21:52	communication, bus, bluetooth, ism, ieee, 802.15.1, ble, lmp, l2cap, rfcomm, iot, arduino, hc-05, hc-06
• lamaPLC Communication: CAN	2025/11/20 20:43	communication, bus, can, canopen, most, automotive ethernet, sent sae-j2716, flexray, lin bus
• lamaPLC Communication: ControlNet	2025/05/31 22:58	bus, communication, devicenet, cip, can, ethernet ip, ethernet, controlnet, mac, peer-to-peer, allen-bradley, rockwell automation, fieldbus, rg-6, coaxial cable
• lamaPLC Communication: DALI	2024/11/16 20:08	communication, rs-232, dali, light technic, diia, selv, manchester, asynchronous, half-duplex, serial, iec 62386, d4i, dali-2, dt6, dt8
• lamaPLC Communication: DASH7	2024/11/16 20:21	bus, communication, dash7, ism, srd, aes 128, d7a, blast, iot, rfid
• lamaPLC Communication: DeviceNet	2024/11/16 19:43	bus, communication, devicenet, 62026-3, cip, can, ethernet ip, ethernet, controlnet, mac, peer-to-peer, canopen, allen-bradley, rockwell automation, bosch
• lamaPLC Communication: DMX512	2024/11/16 00:16	bus, communication, dmx512, dmx512-a, rs-485, xlr3, xlr5
• lamaPLC Communication: EtherNet/IP	2024/11/17 00:26	communication, ethernet, bus, ip, cip, ethernet ip, udp, industrial ethernet, ie, tcp, unicast, devicenet, controlnet, ieee 802.3
• lamaPLC Communication: GPS	2024/11/15 20:15	communication, satellite, navigation, gps, oxc, cdma, glonass, beidou, galileo, qzss, uart, arduino
• lamaPLC Communication: IEC 61850 basic	2025/09/23 21:03	1-wire, communication, bus, xml, iec 61850, iec, ethernet, scl, goose, ied
• lamaPLC Communication: InterBus	2024/11/16 00:46	bus, communication, interbus, phoenix contact, en 50254, iec 61158
• lamaPLC Communication: IoT	2025/05/31 22:50	communication, iot, internet, iomt, 6lowpan, ipv4, ipv6, bluetooth, ble, li-fi, nfc, rfid, wi-fi, zigbee, z-wave, lte-advanced, 5g, lora, dash7, lpwan, lorawan, sigfox, nb-iot, weightless, rpma, mioty, vsat, ethernet, thread, matter
• lamaPLC Communication: I <sup>2</sup> C	2025/09/23 19:25	i2c, i c, smbus, philips, bus, communication, arduino

- [lamaPLC Communication: KNX / EIB](#) 2024/11/15 20:18 [communication, bus, knx, knx tp, knx pl, knx rf, knx ip, eib, ehs, batibus, ethernet, ets](#)
- [lamaPLC Communication: LoRa, LoRaWAN and LoRa Mesh](#) 2026/03/05 15:43 [communication, bus, lora, lorawan, loramesh, mesh, ism, the things network, ttn, aloha, beaconing, csma, csma-ca, mac, adaptive data rate, adr, spreading factor, sf, transmission power, eu863, eu863-870, eu433, us902-928, au915-928, as923, in865-867, cn433, cn470, cn779, cn920, semtech, sx1261, sx1262, sx1276, sx1272, sx1278, encoding rate, er, time on air, toa, iot, netid, listen before talk, lbt](#)
- [lamaPLC communication: Matter](#) 2024/11/15 20:21 [communication, iot, matter, ethernet, tcp, udp, ipv6, thread, ble, cellular, wifi, pki, ip](#)
- [lamaPLC Communication: Modbus](#) 2025/11/19 21:42 [modbus, communication, bus, modicon, standard, rtu, tcp, multimaster, coil, register](#)
- [lamaPLC Communication: MQTT](#) 2024/11/15 20:28 [communication, mqtt, iot, tcp, udp, bluetooth, tcp ip, quic, mqtt-sn, oasis, message broker, mosquitto, qos, arduino, iso iec 20922](#)
- [lamaPLC Communication: NFC](#) 2025/05/31 22:16 [communication, nfc, rfid, bluetooth, ble, manchester, ask, iso iec 18092](#)
- [lamaPLC Communication: NRF24](#) 2024/11/16 01:26 [bus, communication, nrf24, ism, ism band, gfsk, rpd, arduino](#)
- [lamaPLC Communication: OPC](#) 2024/11/15 20:33 [communication, opc, scada, ole, net, xml, tcp, hmi, server, opc ua, opc ua client, mqtt, json, dcom, simatic, erp](#)
- [lamaPLC Communication: PowerLink](#) 2024/11/15 21:15 [communication, bus, ethernet, tcp, udp, http, powerlink, fast ethernet, opensafety](#)
- [lamaPLC Communication: Profibus](#) 2024/11/16 19:09 [profibus, profibus pa, profibus dp, communication, fieldbus, bus, iec 61158, iec 61784-1, profinet, rs-485](#)
- [lamaPLC Communication: RFID](#) 2025/05/31 21:52 [communication, rfid, radio, rf, aidc, prat, arpt, arat, bap, uhf, nfc, em4100, t5557, tag, manchester, fsk, psk, biphasse, nrz](#)
- [lamaPLC Communication: RS-232](#) 2024/11/15 21:51 [bus, communication, rs-232, rs, basic](#)
- [lamaPLC Communication: RS-422](#) 2024/11/15 21:50 [bus, communication, rs-422, rs, basic](#)
- [lamaPLC Communication: RS-485](#) 2024/11/15 21:52 [bus, communication, rs-485, rs, basic, profibus](#)
- [lamaPLC Communication: SCADA](#) 2024/11/17 00:33 [communication, scada, industry, industrial, hmi](#)
- [lamaPLC Communication: Sinec H1](#) 2024/11/16 20:44 [communication, bus, fieldbus, sinec-h1, s5, s7, simatic, siemens, industrial ethernet, ie, iec 8073](#)
- [lamaPLC Communication: SPI](#) 2024/11/15 21:58 [bus, communication, spi, basic, arduino, ssi, sdi, miso, sdo](#)

• <a href="#">lamaPLC Communication: TCP / UDP Basic</a>	2025/11/20 21:49	<a href="#">communication</a> , <a href="#">bus</a> , <a href="#">tcp</a> , <a href="#">udp</a> , <a href="#">tcp ip</a> , <a href="#">darpa</a> , <a href="#">ietf</a> , <a href="#">smtp</a> , <a href="#">http</a> , <a href="#">https</a> , <a href="#">ftp</a> , <a href="#">ftps</a> , <a href="#">ssh</a> , <a href="#">pop3</a> , <a href="#">imap</a> , <a href="#">mysql</a> , <a href="#">cpanel</a> , <a href="#">whm</a> , <a href="#">ssl</a> , <a href="#">webmail</a> , <a href="#">mqtt</a> , <a href="#">ethernet</a> , <a href="#">ip</a>
• <a href="#">lamaPLC communication: Thread</a>	2024/11/15 22:07	<a href="#">bus</a> , <a href="#">communication</a> , <a href="#">matter</a> , <a href="#">thread</a> , <a href="#">matter over thread</a> , <a href="#">zigbee</a> , <a href="#">aes</a> , <a href="#">ipv6</a> , <a href="#">iot</a> , <a href="#">6lowpan</a> , <a href="#">ethernet</a> , <a href="#">wifi</a>
• <a href="#">lamaPLC Communication: UART / USART basic</a>	2025/02/11 20:21	<a href="#">bus</a> , <a href="#">communication</a> , <a href="#">uart</a> , <a href="#">rs-232</a> , <a href="#">rs-422</a> , <a href="#">rs-485</a>
• <a href="#">lamaPLC Communication: USB</a>	2025/11/20 23:07	<a href="#">usb</a> , <a href="#">usb otg</a> , <a href="#">otg</a> , <a href="#">msc</a> , <a href="#">ums</a> , <a href="#">mtp</a> , <a href="#">dfu</a> , <a href="#">uac</a> , <a href="#">adc</a> , <a href="#">communication</a> , <a href="#">bus</a> , <a href="#">basic</a>
• <a href="#">lamaPLC Communication: Wi-Fi</a>	2024/11/16 18:46	<a href="#">communication</a> , <a href="#">iot</a> , <a href="#">internet</a> , <a href="#">wi-fi</a> , <a href="#">wifi</a> , <a href="#">ieee 802.11</a>
• <a href="#">lamaPLC Communication: Wiegand</a>	2024/11/16 23:39	<a href="#">wiegand</a> , <a href="#">communication</a> , <a href="#">interface</a> , <a href="#">cr80</a> , <a href="#">iec 7810</a> , <a href="#">h10301</a> , <a href="#">hid</a> , <a href="#">wiegand 26</a> , <a href="#">wiegand 32</a> , <a href="#">wiegand 34</a> , <a href="#">wiegand 35</a> , <a href="#">wiegand 37</a> , <a href="#">wiegand 38</a> , <a href="#">wiegand 42</a>
• <a href="#">lamaPLC Communication: WS2812</a>	2024/11/15 23:36	<a href="#">bus</a> , <a href="#">communication</a> , <a href="#">ws2812</a> , <a href="#">ws2812b</a> , <a href="#">ws 2812</a> , <a href="#">ws 2812 b</a> , <a href="#">5050smd</a> , <a href="#">4020</a> , <a href="#">2020</a> , <a href="#">3535</a> , <a href="#">5050</a> , <a href="#">nzs</a> , <a href="#">rgb chip</a> , <a href="#">led</a> , <a href="#">arduino</a> , <a href="#">rgb</a>
• <a href="#">lamaPLC Communication: Z-Wave</a>	2024/11/17 21:25	<a href="#">communication</a> , <a href="#">ethernet</a> , <a href="#">bus</a> , <a href="#">ip</a> , <a href="#">z-wave</a> , <a href="#">ism</a>
• <a href="#">lamaPLC Communication: Zigbee</a>	2024/11/17 21:43	<a href="#">communication</a> , <a href="#">ethernet</a> , <a href="#">bus</a> , <a href="#">ip</a> , <a href="#">zigbee</a> , <a href="#">wpan</a> , <a href="#">bluetooth</a> , <a href="#">wi-fi</a> , <a href="#">ism</a> , <a href="#">ieee 802.15.4</a> , <a href="#">zdo</a> , <a href="#">zigbee pro</a> , <a href="#">zc</a> , <a href="#">zr</a> , <a href="#">zed</a> , <a href="#">smart energy</a> , <a href="#">homegrid</a> , <a href="#">homeplug</a> , <a href="#">powerline</a> , <a href="#">ipso</a> , <a href="#">sunspec</a> , <a href="#">6lowpan</a> , <a href="#">ipv6</a> , <a href="#">rf4ce</a>
• <a href="#">LamaPLC: AHT10 Modul</a>	2026/03/21 19:20	<a href="#">communication</a> , <a href="#">i2c</a> , <a href="#">temperature</a> , <a href="#">humidity</a> , <a href="#">sensor</a> , <a href="#">aht</a> , <a href="#">aht 10</a> , <a href="#">modul</a>
• <a href="#">lamaPLC: AI-Thinker LoRA products</a>	2026/03/05 15:40	<a href="#">ai-thinker</a> , <a href="#">lora manufacturer</a> , <a href="#">communication</a> , <a href="#">lora</a> , <a href="#">modul</a> , <a href="#">ra-01</a> , <a href="#">ra-02</a> , <a href="#">spi</a> , <a href="#">arduino</a>
• <a href="#">LamaPLC: APDS - Avago ALS and proximity detection sensors with I<sup>2</sup>C communication</a>	2026/02/14 22:24	<a href="#">avago</a> , <a href="#">apds-9900</a> , <a href="#">apds-9930</a> , <a href="#">apds-9960</a> , <a href="#">als</a> , <a href="#">proximity</a> , <a href="#">detection</a> , <a href="#">gesture recognition</a> , <a href="#">gesture</a> , <a href="#">i2c</a> , <a href="#">communication</a> , <a href="#">sensor</a> , <a href="#">arduino</a> , <a href="#">code</a>
• <a href="#">lamaPLC: AS5600 Magnetic Induction Angle Measurement Sensor Module</a>	2026/03/28 22:50	<a href="#">communication</a> , <a href="#">i2c</a> , <a href="#">as5600</a> , <a href="#">as-5600</a> , <a href="#">magnetic</a> , <a href="#">induction</a> , <a href="#">angle</a> , <a href="#">sensor</a>
• <a href="#">LamaPLC: BMP/BME Bosch Temperature/Humidity/Pressure sensors with I<sup>2</sup>C communication</a>	2026/02/15 20:40	<a href="#">bme280</a> , <a href="#">bme680</a> , <a href="#">bmp180</a> , <a href="#">bmp280</a> , <a href="#">hw-611</a> , <a href="#">hw611</a> , <a href="#">bosch</a> , <a href="#">temperature</a> , <a href="#">humidity</a> , <a href="#">pressure</a> , <a href="#">sensor</a> , <a href="#">arduino</a> , <a href="#">i2c</a> , <a href="#">communication</a> , <a href="#">cjmcu</a>
• <a href="#">lamaPLC: CJMCU-164; SN74HC164D 8-bit Shift Register Module</a>	2026/02/14 22:48	<a href="#">cjmcu-164</a> , <a href="#">sn74hc164d</a> , <a href="#">8-bit shift register</a> , <a href="#">communication</a> , <a href="#">7-segment</a> , <a href="#">cjmcu</a> , <a href="#">arduino</a>
• <a href="#">LamaPLC: CJMCU-219/INA-219 breakout board/IC with I<sup>2</sup>C communication</a>	2026/02/14 23:37	<a href="#">cjmcu-219</a> , <a href="#">ina-219</a> , <a href="#">ina219</a> , <a href="#">breakout board</a> , <a href="#">i2c</a> , <a href="#">communication</a> , <a href="#">sensor</a> , <a href="#">voltage</a> , <a href="#">current</a> , <a href="#">arduino</a> , <a href="#">code</a> , <a href="#">cjmcu</a>

- [LamaPLC: CJMCU-3216 / AP-3216 integrated digital ambient light and proximity sensor module/IC with I<sup>2</sup>C communication](#)

2026/02/14 22:40

cjmcu-3216, cjmcu, ap-3216, ap3216, ambient light, proximity, sensor, arduino, code, i2c, communication
- [LamaPLC: CJMCU-3901/PMW-3901 compact optical flow sensor module/IC by PixArt with SPI communication](#)

2026/02/14 22:39

cjmcu-3901, cjmcu, pmw3901, pmw-3901, optical flow, sensor, pixart, spi, communication, arduino, code, pmw3901mb-txqt
- [LamaPLC: CJMCU-6701: Biosensor for measuring Galvanic Skin Response \(GSR\) with SPI communication](#)

2026/02/14 23:39

cjmcu, cjmcu-6701, acs758, acs-758, galvanic skin response, gsr, electrodermal activity, eda, spi, communication, arduino, code, sensor, healthcare
- [LamaPLC: DPS Infineon Temperature/Pressure sensors with I2C communication](#)

2026/02/14 18:11

dps310, infineon, temperature, pressure, sensor, arduino, i2c, communication, code
- [lamaPLC: DS18B20 1-Wire Digital Thermometer](#)

2026/02/15 20:44

ds18b20, sensor, 1-wire, communication, arduino, thermometer, parasitic mode
- [lamaPLC: Ebyte LoRA products](#)

2026/03/05 15:20

ebyte, lora manufacturer, communication, lora, modul
- [lamaPLC: Energy, power, current, and voltage](#)

2025/05/31 21:32

i2c, i c, communication, arduino, energy, power, current, sensor, ina226
- [LamaPLC: ENS ScioSense Multi-gas sensors with I<sup>2</sup>C communication](#)

2026/02/14 19:29

ens160, sciosense, gas-quality, i2c, communication, sensor, arduino, code, eco2, tvoc, aqi, indoor air quality, iaq, co2, voc
- [lamaPLC: ESP32 / ESP8266](#)

2025/11/21 23:07

esp8266, esp32, esp32-c2, esp32-c3, esp32-c5, esp32-c6, esp32-c61, esp32-h2, esp32-s2, esp32-s3, esp32-p4, espressif systems, communication, ethernet, ip, wi-fi, thread, zigbee, matter, homekit, bluetooth, mqtt, adc, spi, uart, i2c, i2s, rmt, pwm, usb, usb otg, twai
- [LamaPLC: Gas sensors](#)

2023/07/01 15:29

gas, sensor, i2c, onewire, communication, mq-3, mq-4, mq-5, mq-6, mq-7, mq-8, mq-9, mq-135, gm-102b, gm-302b, gm-502b, gm-702b, alcohol, ch4, natural gas, smoke, lng, co, co2, lpg, h2, iso-butane, nox, nh3, benzene, town gas, formaldehyde, propane, humidity, temperature, voc, grv gas sens v2
- [LamaPLC: GY-9250 MPU-9250/6500 9-axis Attitude Sensor Board](#)

2026/02/14 22:45

ak8963, gy-9250, mpu-9250, 9-axis, motion detection, magnetometer, communication, i c, i2c, spi
- [LamaPLC: HDC Texas Instruments Temperature/humidity sensors with I<sup>2</sup>C communication](#)

2026/02/14 22:09

sht21, htu21, si7021, gy-21, gy-213v, hdc1080, gy-213v-hdc1080, cjmcu, cjmcu-1080, texas instruments, temperature, humidity, sensor, i2c, communication, arduino, code

• LamaPLC: HTU TE Connectivity temperature/humidity sensors with I <sup>2</sup> C communication	2026/02/14 21:54	htu, htu31d, htu21d, htu20d, sht20, htu20, sht21, htu21, si7021, gy-21, gy-213v, hdc1080, si702, gy-20, sht31, htu31, si7031, gy-31, te connectivity, temperature, humidity, i2c, communication, sensor, arduino, code
• LamaPLC: HX711 24-bit analog-to-digital converter (ADC)	2026/02/15 23:59	hx711, hx-711, analog-to-digital, adc, converter, load cell, wheatstone bridge, weight, sensor, communication, arduino, code
• lamaPLC: INA modules with Arduino libraries	2026/03/28 18:02	i2c, i c, communication, arduino, energy, power, current, monitor, sensor, ina219, gy-219, ina226, gy-216, ina228, gy-228, ina237, ina238, ina260, ina3221, ina
• lamaPLC: INA226 - current/voltage/power monitor with I <sup>2</sup> C communication	2026/02/14 23:58	i2c, i c, communication, arduino, energy, power, current, monitor, sensor, ina226, ina219, ina
• lamaPlc: Industrial Ethernet (IE) Basic	2024/11/15 20:17	communication, bus, ethernet, industrial ethernet, ie, ethercat, ethernet ip, profinet, powerlink, sercos, iii, cc-link, modbus tcp, ieee, rstp, stp
• lamaPLC: LCD 1602/2004 with I <sup>2</sup> C communication	2026/02/14 17:27	communication, i2c, display, lcd, 1602, 2004, hd44780, pcf8574, pcf8574t, pcf8574at, arduino
• lamaPLC: LTC3588 - Nanopower energy harvesting power supply IC	2026/02/14 23:35	communication, arduino, sensor, energy harvesting, energy, ambient power
• LamaPLC: MAX30100/MAX30102 Heart Rate Click Sensor Module	2026/02/14 23:38	max30102, max30100, heart rate click, sensor, communication, i2c, arduino, code
• lamaPLC: MCP23017 / MCP23S17 16-Bit I/O Expander with Serial Interface I <sup>2</sup> C / SPI	2026/02/14 22:52	communication, i2c, mcp23017, mcp23s17, spi, i o expander, serial, cjmcu-2317, cjmcu
• LamaPLC: MH-Z19 series of NDIR CO <sub>2</sub> sensors	2026/02/15 20:20	mh-z19, mh-z19d, mh-z19c, mh-z19b, mh-z19e, ndir, co <sub>2</sub> , sensor, winsen, uart, pwm, communication, non-dispersive infrared, infrared, ir, temperature, arduino, code, tasmota
• LamaPLC: Pixart PAJ7620U2 Gesture recognition sensors/module with I <sup>2</sup> C communication	2026/02/14 22:23	paj7620u2, gy-paj7620, pixart, gesture recognition, i2c, communication, sensor, arduino, code
• lamaPlc: Profinet	2024/11/15 20:39	communication, bus, profinet, mrp, rstp, gsddl, xml, profibus, ethernet, tcp
• lamaPLC: PTA8C04 4-channel PT100 Modbus Modul	2026/02/14 17:42	pta8c04, sensor, modbus, rtu, rs-485, communication, platine, um72
• LamaPLC: S7-1500 and Metrawatt EM2389 Modbus TCP communication	2024/11/18 17:55	simatic, s7, modbus, communication, metrawatt, em2389, source code, scl, mid
• LamaPLC: S7-1500 and Sicam Q200 Modbus TCP communication	2023/06/24 22:42	simatic, s7, modbus, tia portal, communication, sicam, q200, sicam q200, source code, scl, class a

• <a href="#">lamaPLC: S7-1500 and UICPAL Temp.humi.sensor Modbus TCP communication</a>	2023/06/19 21:24	<a href="#">bus, communication, s7, simatic, s7 1500, s7 1200, scl, uicpal, temperature, humidity, modbus, example, download, tia portal</a>
• <a href="#">LamaPLC: SGP Sensirion Gas-sensors with I<sup>2</sup>C communication</a>	2026/02/15 20:27	<a href="#">sgp30, sgp40, sgp41, sensirion, gas-sensor, i2c, communication, sensor, arduino, code, eco2, voc, tvoc, indoor air quality, iaq, nox, hydrogen</a>
• <a href="#">LamaPLC: SHT Sensirion Temperature/humidity sensor with I<sup>2</sup>C communication</a>	2026/02/15 20:29	<a href="#">sht20, sht21, sht25, sht30, sht31, sht35, sht40, gy21, temperature, humidity, i2c, communication, sensor, arduino, code</a>
• <a href="#">lamaPLC: TCA9548A (HW617); Low-Voltage 8-Channel I<sup>2</sup>C Switch Module</a>	2026/02/14 22:51	<a href="#">tca9548a, hw617, i2c, switch, communication, expansion board, arduino</a>
• <a href="#">LamaPLC: Texas Instruments ADCs: Delta-sigma multi-channel Analog Converters with SPI communication</a>	2026/02/15 22:34	<a href="#">ads111x, ads12xx, delta-sigma, converter, texas instruments, adc, spi, communication, sensor, arduino, code, ads1110, ads1112, ads1113, ads1114, ads1115, ads1118, ads1119, ads1220, ads1232, ads1234, ads1256, ads1261, ads1263, multi channel</a>
• <a href="#">LamaPLC: TOFnnnC STMicroelectronics Time-of-Flight (ToF) sensors with I<sup>2</sup>C communication</a>	2026/02/14 22:22	<a href="#">tof050c, vl6180, tof200c, vl53l0x, tof400c, vl53l1x, stmicroelectronics, time-of-flight, tof, i2c, communication, sensor, arduino, code</a>
• <a href="#">lamaPLC: TWAI basics</a>	2025/11/20 21:41	<a href="#">bus, communication, as-i, basic, can, twai, espressif, esp32</a>
• <a href="#">LamaPLC: UICPAL Temp.humi.sensor</a>	2023/06/24 22:43	<a href="#">simatic, s7, modbus, communication, temperature, humidity, sensor</a>
• <a href="#">LamaPLC: VL53Lnn STMicroelectronics time-of-flight (ToF) laser-ranging sensors with I<sup>2</sup>C communication</a>	2026/02/14 22:21	<a href="#">vl53l0x, vl53l1x, vl53l0 1xv2, gy-530, time-of-flight, tof, laser-ranging, i2c, communication, sensor, arduino, code</a>
• <a href="#">LamaPLC: VL6180X STMicroelectronics Time-of-Flight (ToF) sensor with I<sup>2</sup>C communication</a>	2026/02/14 22:22	<a href="#">vl6180x, stmicroelectronics, time-of-flight, tof, i2c, communication, sensor, arduino, code</a>
• <a href="#">lamaPLC: Waveshare LoRA products</a>	2026/03/05 15:20	<a href="#">waveshare, lora manufacturer, communication, lora, modul, usb-to-lora-xf02, core 1262, 1262, spi, arduino, rp2040-lora, rp2040</a>
• <a href="#">LamaPLC: XTM35SC Modbus communication</a>	2024/08/18 14:52	<a href="#">xtm35sc, modbus, modbus rtu, measuring, power, communication, current meter, voltmeter</a>
• <a href="#">lamaPLC: YR-3180 - Weight sensor module with UART or Modbus communication</a>	2026/02/14 23:00	<a href="#">communication, modbus, rtu, sensor, weight, yr-3180, hx710b, arduino, ttl, rs-485</a>
• <a href="#">Magnetic angle sensors</a>	2026/03/05 20:19	<a href="#">magnetic angle sensor, magnetic flux, sensor, spi, i2c, pwm, communication, modul, as5047p, as5600, mt6701, mt6816, mt6835, tle5012b, amr, gmr, tmr, anisotropic magnetoresistive</a>
• <a href="#">NT18B07: 7 Kanal RS485 Temperatur Sensor with Modbus RTU</a>	2026/02/14 17:49	<a href="#">nt18b07, sensor, modbus, rtu, rs-485, communication, platine</a>

- [Simatic Modbus S7 error- and statuscodes](#) 2025/11/13 22:59 [communication, bus, modbus, error, modbus error code, 7000, 7001, 7002, 7003, 7004, 7005, 7006, 80a1, simatic, s7, siemens, tia](#)
- [Waveshare](#) 2023/06/17 19:43 [waveshare, converter, modbus, modbus rtu, modbus tcp, communication](#)
- [XTM35SC current / voltage meter](#) 2023/06/01 11:45 [xtm35sc, modbus, modbus rtu, measuring, power, communication, current meter, voltmeter](#)

[communication, bus, LoRa, LoRaWAN, LoRaMesh, Mesh, ISM, The Things Network, TTN, Aloha, Beaconing, CSMA, CSMA-CA, MAC, Adaptive Data Rate, ADR, Spreading factor, SF, Transmission power, EU863, EU863-870, EU433, US902-928, AU915-928, AS923, IN865-867, CN433, CN470, CN779, CN920, Semtech, SX1261, SX1262, SX1276, SX1272, SX1278, Encoding Rate, ER, Time on Air, ToA, IoT, NetID, Listen Before Talk, LBT](#)

This page has been accessed for: Today: 6, Until now: 194

From:  
<http://lamaplc.com/> - **lamaPLC**

Permanent link:  
[http://lamaplc.com/doku.php?id=com:basic\\_lora&rev=1772811294](http://lamaplc.com/doku.php?id=com:basic_lora&rev=1772811294)

Last update: **2026/03/06 15:34**

